



Arizona

OVERALL RANK: 31

CHANGE: ▼ 1

DETERMINANTS RANK: 34

OUTCOMES RANK: 23

STRENGTHS

- Low prevalence of smoking
- Low prevalence of physical inactivity
- Low cardiovascular death rate

CHALLENGES

- Low percentage of high school graduation
- High levels of air pollution
- Low Tdap immunization coverage among adolescents

HIGHLIGHTS

- Since 2007, drug deaths increased 53% from 13.6 to 20.8 deaths per 100,000 population
- Since 2012, children in poverty decreased 26% from 27.2% to 20.1% of children
- Since 2003, dentists increased 21% from 45.0 to 54.4 per 100,000 population
- In the past three years, air pollution increased 4% from 9.3 to 9.7 micrograms of fine particles per cubic meter
- Since 1990, infant mortality decreased 40% from 9.4 to 5.6 deaths per 1,000 live births
- Since 2012, diabetes increased 13% from 9.6% to 10.8% of adults

WEBSITE: azdhs.gov

RANKINGS MEASURES

Measure	Rating	2019 Value	2019 Rank
BEHAVIORS			
Drug Deaths (Deaths per 100,000 population)	+++	20.8	29
Excessive Drinking (Percentage of adults)	+++	17.2%	21
High School Graduation (Percentage of students)	+	78.0%	48
Obesity (Percentage of adults)	++++	29.5%	15
Physical Inactivity (Percentage of adults)	++++	22.1%	15
Smoking (Percentage of adults)	++++	14.0%	11
Behaviors * (All Behaviors Measures)	+++	0.004	21
COMMUNITY & ENVIRONMENT			
Air Pollution (Micrograms of fine particles per cubic meter)	+	9.7	49
Children in Poverty (Percentage of children ages 0-17)	++	20.1%	37
Community and Environment * (All Community & Environment Measures)	+	-0.092	43
Infectious Disease * (Mean z score of chlamydia, pertussis and Salmonella)	+++	-0.100	24
Chlamydia (Cases per 100,000 population)	++	564.4	39
Pertussis (Cases per 100,000 population)	+++	6.0	29
Salmonella (Cases per 100,000 population)	++++	12.4	12
Occupational Fatalities (Deaths per 100,000 workers)	++++	4.3	19
Violent Crime (Offenses per 100,000 population)	+	475	41
POLICY			
Immunizations - Adolescents * (Mean z score of HPV, meningococcal and Tdap)	++	-0.457	37
HPV Immunization Females (Percentage of females ages 13-17)	++	51.0%	36
HPV Immunization Males (Percentage of males ages 13-17)	+++	50.4%	25
Meningococcal Immunization (Percentage of adolescents ages 13-17)	++++	89.1%	17
Tdap Immunization (Percentage of adolescents ages 13-17)	+	82.9%	47
Immunizations - Children (Percentage of children ages 19-35 months)	+	66.5%	44
Public Health Funding (Dollars per person)	+	\$53	47
Uninsured (Percentage of population)	++	10.4%	39
Policy * (All Policy measures)	+	-0.081	45
CLINICAL CARE			
Dentists (Number per 100,000 population)	+++	54.4	25
Low Birthweight (Percentage of live births)	++++	7.5%	15
Mental Health Providers (Number per 100,000 population)	+	132.9	47
Preventable Hospitalizations (Discharges per 1,000 Medicare enrollees)	+++++	36.1	8
Primary Care Physicians (Number per 100,000 population)	++	125.8	40
Clinical Care * (All Clinical Care measures)	+++	-0.019	29
ALL DETERMINANTS			
All Determinants * (All Determinants)	++	-0.187	34
OUTCOMES			
Cancer Deaths (Deaths per 100,000 population)	+++++	168.5	4
Cardiovascular Deaths (Deaths per 100,000 population)	+++++	223.8	7
Diabetes (Percentage of adults)	+++	10.8%	23
Disparity in Health Status (Percentage point difference)	++	27.1%	31
Frequent Mental Distress (Percentage of adults)	+++	12.5%	27
Frequent Physical Distress (Percentage of adults)	++	14.2%	38
Infant Mortality (Deaths per 1,000 live births)	++++	5.6	16
Premature Death (Years lost before age 75 per 100,000 population)	+++	7,467	24
All Outcomes * (All Outcomes Measures)	+++	0.039	23
OVERALL			
Overall * (Overall)	++	-0.148	31

RATING RANK
+++++ 1-10
++++ 11-20
+++ 21-30
++ 31-40
+ 41-50

* Value indicates z score. Negative scores are below US value; positive scores are above US value. For complete definitions of measures including data sources and years, see "[Appendix: Rankings Measures Table](#)".

- Data Unavailable

SUPPLEMENTAL MEASURES

Measure	Rating	2019 Value	2019 Rank
Adverse Childhood Experiences (Percentage of children ages 0-17)	+	27.3%	48
Arthritis (Percentage of adults)	++++	25.3%	19
Asthma (Percentage of adults)	++	10.0%	33
Cancer (Percentage of adults)	++	7.6%	35
Cardiovascular Diseases (Percentage of adults)	+++	9.3%	30
Cholesterol Check (Percentage of adults)	+++	85.2%	30
Chronic Kidney Disease (Percentage of adults)	+	3.6%	41
Chronic Obstructive Pulmonary Disease (Percentage of adults)	+++	71%	30
Colorectal Cancer Screening (Percentage of adults ages 50-75)	++	67.4%	36
Concentrated Disadvantage (Percentage of households)	+	34.2%	47
Dedicated Health Care Provider (Percentage of adults)	++	73.6%	40
Dental Visit (Percentage of adults)	++	62.3%	40
Depression (Percentage of adults)	++++	16.7%	14
Disconnected Youth (Percentage of teens and young adults ages 16-24)	++	12.6%	36
Economic Hardship Index (Index from 1-100)	+	73	44
Fruits (Mean number of fruits per day)	+++++	1.7	7
Heart Attack (Percentage of adults)	+++	4.6%	26
Heart Disease (Percentage of adults)	+++	4.3%	26
High Blood Pressure (Percentage of adults)	+++++	30.7%	18
High Cholesterol (Percentage of adults)	+++	33.4%	28
High Health Status (Percentage of adults)	+++	49.2%	29
Injury Deaths (Deaths per 100,000 population)	++	84.2	32
Insufficient Sleep (Percentage of adults)	+++	34.0%	22
Median Household Income (Dollars per household)	+++	\$62,283	26
Multiple Chronic Conditions (Percentage of adults)	+++	10.4%	27
Neighborhood Amenities (Percentage of children ages 0-17)	++	33.2%	31
Seat Belt Use (Percentage of adults)	+++	86.4%	25
Severe Housing Problems (Percentage of occupied housing units)	+	18.5%	42
Stroke (Percentage of adults)	+++	3.4%	26
Suicide (Deaths per 100,000 population)	++	19.1	33
Underemployment Rate (Percentage of civilian workforce)	+	9.1%	45
Unemployment Rate, Annual (Percentage of civilian workforce)	+	4.7%	45
Vegetables (Mean number of vegetables per day)	+++++	2.3	7
Voter Registration (Percentage of citizens registered to vote)	+++	68.6%	21
Water Fluoridation (Percentage of population served)	++	57.8%	38

RATING	RANK
+++++	1 – 10
++++	11 – 20
+++	21 – 30
++	31 – 40
+	41 – 50

For complete definitions of measures including data sources and years, see [Appendix: Supplemental Measures Table](#)".

- Data Unavailable

Obesity



29.5% NO CHANGE

SINCE 2018, OBESITY* **REMAINED THE SAME.**

* Percentage of adults

Diabetes



10.8%

SINCE 2018, DIABETES* **INCREASED 4% FROM 10.4% TO 10.8%**

* Percentage of adults

Infant Mortality



5.6

SINCE 2018, INFANT MORTALITY* **INCREASED 4% FROM 5.4 TO 5.6**

* Deaths per 1,000 live births

Children in Poverty



20.1%

SINCE 2018, CHILDREN IN POVERTY* **DECREASED 15% FROM 23.6% TO 20.1%**

* Percentage of children ages 0-17

Mental Health Providers



132.9

SINCE 2018, MENTAL HEALTH PROVIDERS* **INCREASED 3% FROM 129.3 TO 132.9**

* Number per 100,000 population

Suicide



19.1

SINCE 2018, SUICIDE* **INCREASED 3% FROM 18.5 TO 19.1**

* Deaths per 100,000 population



Top 5 States

1: VERMONT

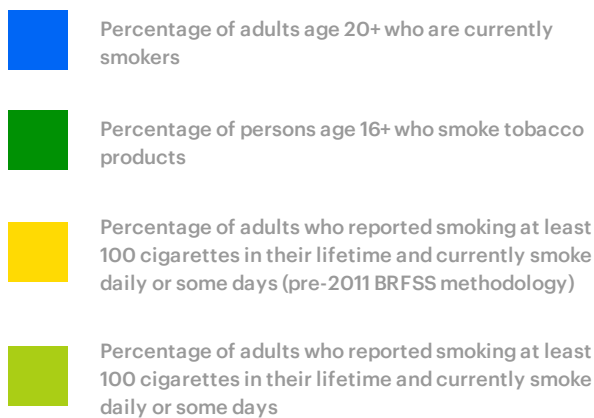
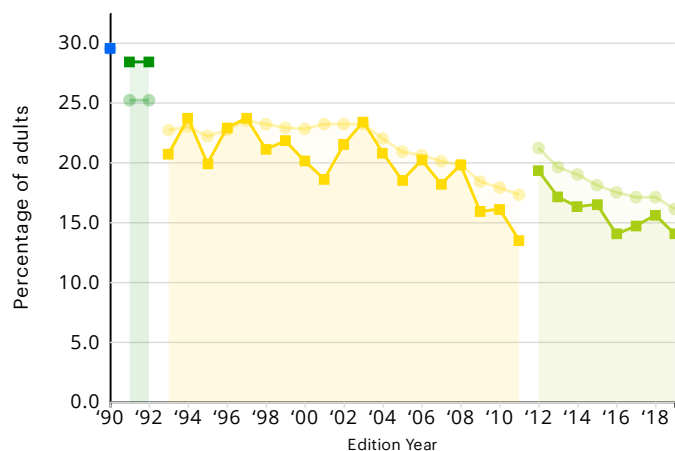
2: MASSACHUSETTS

3: HAWAII

4: CONNECTICUT

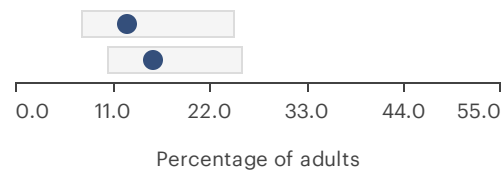
5: UTAH

Smoking



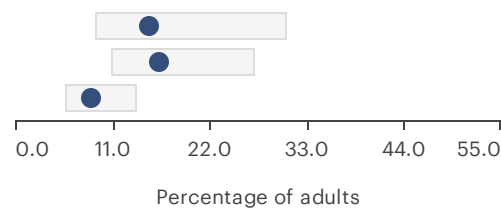
GENDER

Female
Male



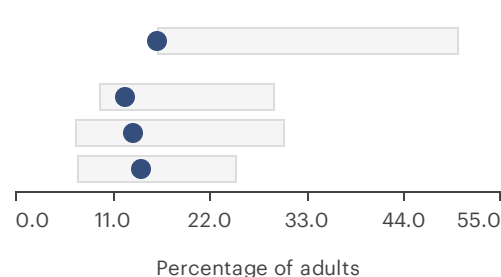
AGE

Ages 18-44
Ages 45-64
Ages 65+



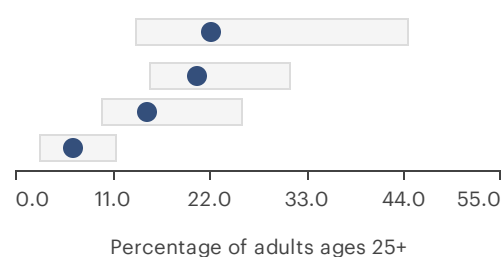
RACE/ETHNICITY

American Indian/Alaska Native
Black
Hispanic
White



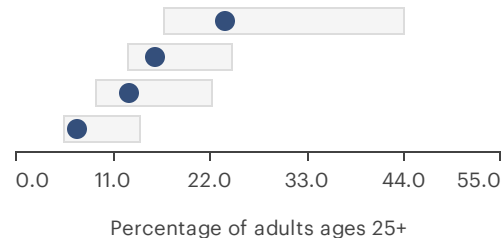
EDUCATION

Less Than High School
High School Grad
Some College
College Grad



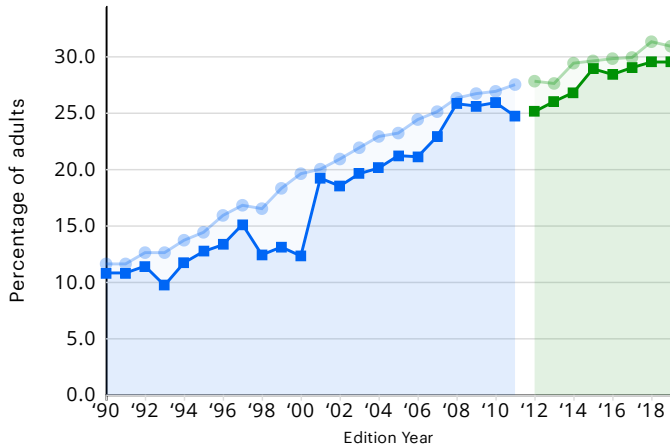
INCOME

Less Than \$25,000
\$25-\$49,999
\$50-\$74,999
\$75,000 or More



Data suppression rules are as defined by the original source.
Race and ethnicity populations are as defined by the original source.

Obesity



Percentage of adults with a body mass index of 30.0 or higher based on reported height and weight (pre-2011 BRFSS methodology)

Percentage of adults with a body mass index of 30.0 or higher based on reported height and weight

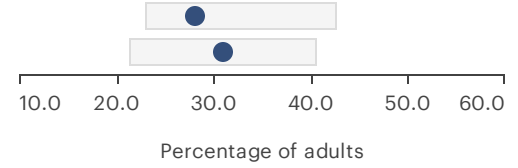
Arizona United States

Range of Values for all States AZ Value

GENDER

Female

Male

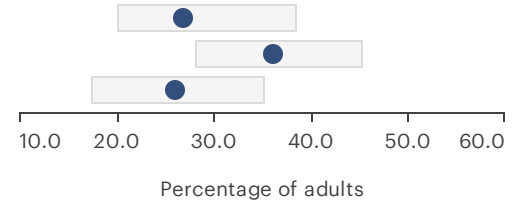


AGE

Ages 18-44

Ages 45-64

Ages 65+



RACE/ETHNICITY

American Indian/Alaska Native

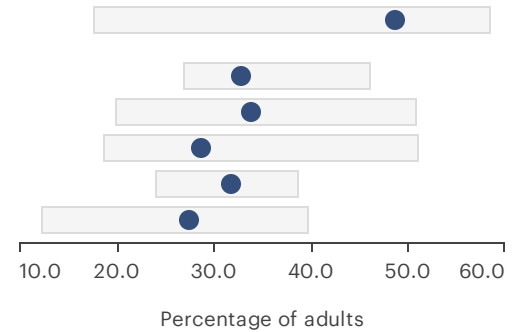
Black

Hispanic

Multiracial

Other Race

White



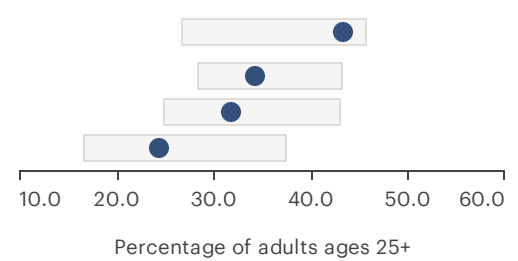
EDUCATION

Less Than High School

High School Grad

Some College

College Grad



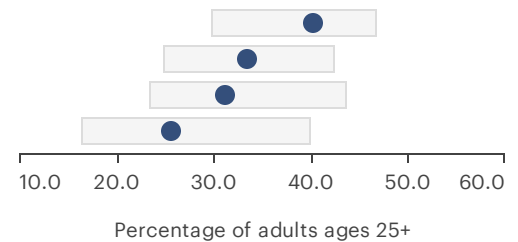
INCOME

Less Than \$25,000

\$25-\$49,999

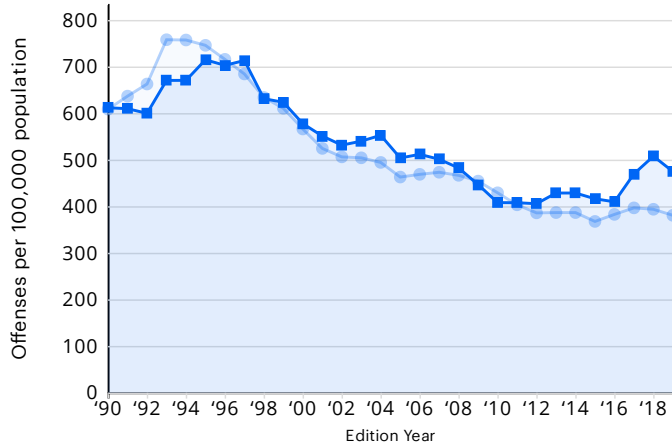
\$50-\$74,999

\$75,000 or More



Data suppression rules are as defined by the original source.
Race and ethnicity populations are as defined by the original source.

Violent Crime



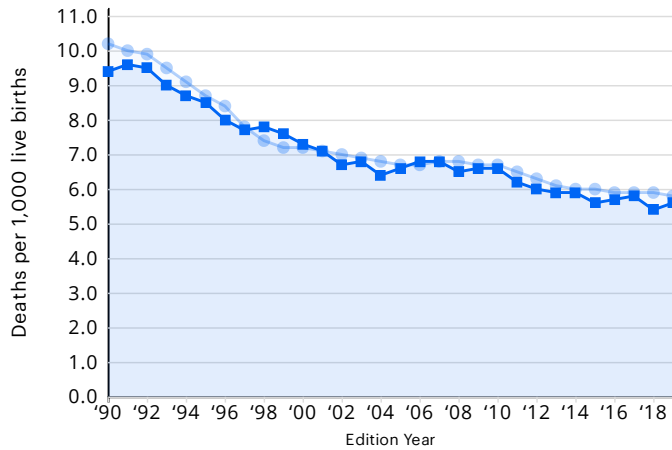
Number of murders, rapes, robberies and aggravated assaults per 100,000 population

■ Arizona

● United States

Sub-Population Data Unavailable

Infant Mortality



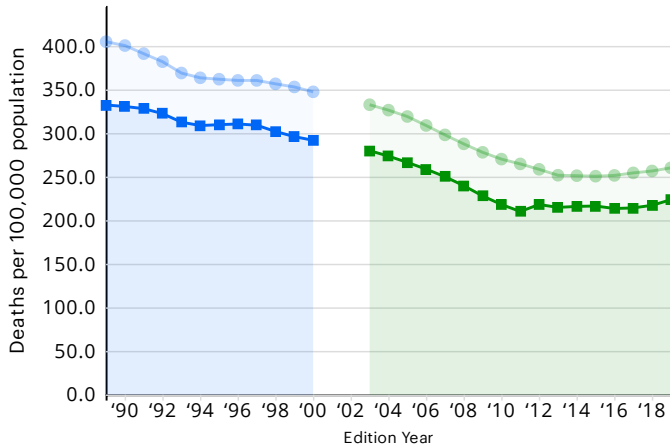
Number of infant deaths (before age 1) per 1,000 live births (2-year estimate)

Arizona

United States

Sub-Population Data Unavailable

Cardiovascular Deaths



Number of deaths due to all cardiovascular diseases including heart disease and stroke per 100,000 population (3-year estimate age-adjusted to mid-year)(ICD-9)

Number of deaths due to all cardiovascular diseases including heart disease and stroke per 100,000 population (3-year estimate age-adjusted to mid-year)

■ Arizona ● United States

VIEW OPTIONS:

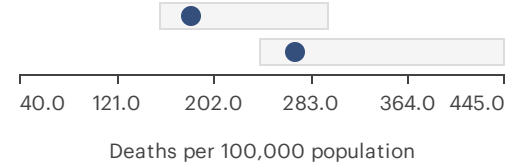
[View By Other Age-Adjustment Methods](#)



GENDER

Female

Male



RACE/ETHNICITY

American

Indian/Alaska

Native

Asian/Pacific

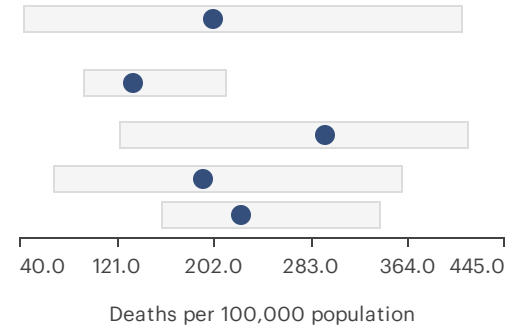
Islander

Black/African

American

Hispanic/Latino

White

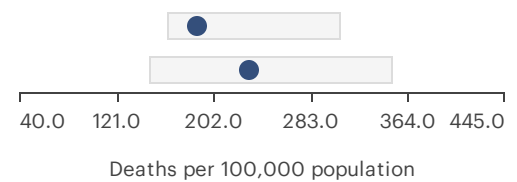


AGE-ADJUSTMENT METHODS

Standard Age

Adjustment

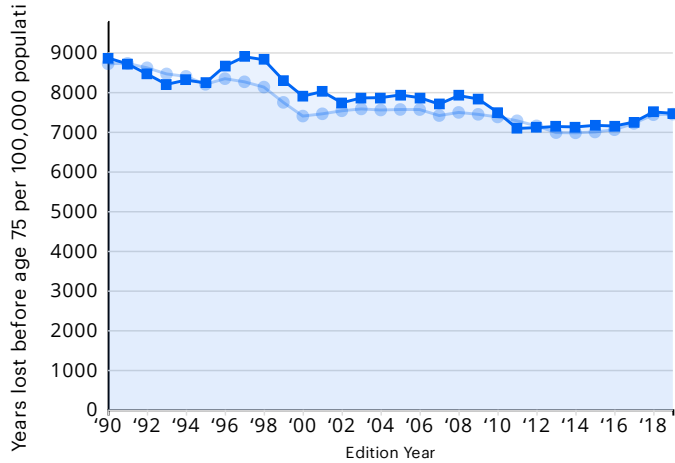
Crude Rate



Data suppression rules are as defined by the original source.

Race and ethnicity populations are as defined by the original source.

Premature Death

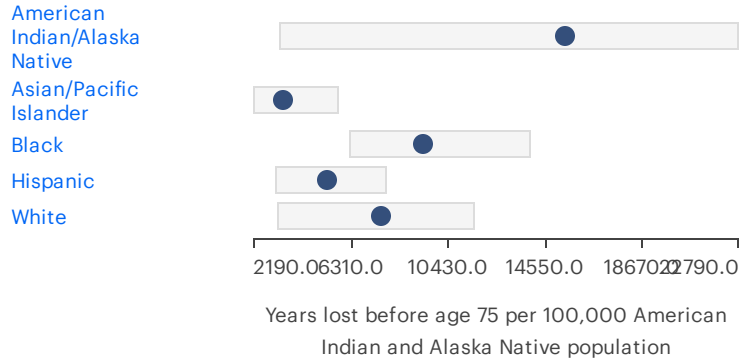


Number of years of potential life lost before age 75 per 100,000 population, one year estimate

Arizona United States



RACE/ETHNICITY



Data suppression rules are as defined by the original source.
Race and ethnicity populations are as defined by the original source.

