

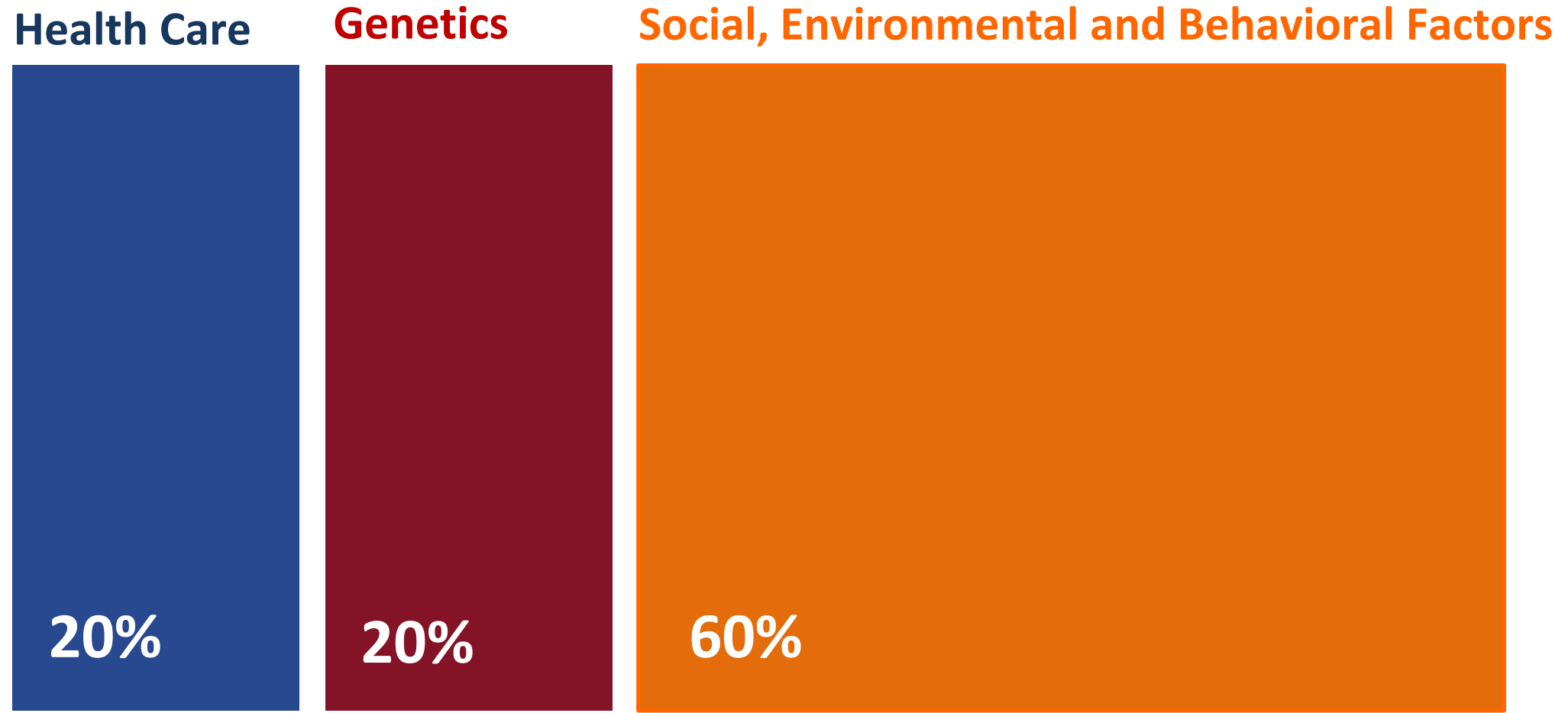
# Moving the Needle on Social Determinants of Health

Julia Resnick, MPH

Senior Program Manager, Health Research & Educational Trust  
American Hospital Association



# WHAT MAKES PEOPLE HEALTHY?



Source: University of Wisconsin Population Health Institute. County Health Rankings & Roadmaps 2016. [www.countyhealthrankings.org](http://www.countyhealthrankings.org).

# ZIP CODE MATTERS

Health comes not just from the care you receive, but where you live, learn, work and play.

CHICAGO, ILLINOIS

## Short Distances to Large Gaps in Health

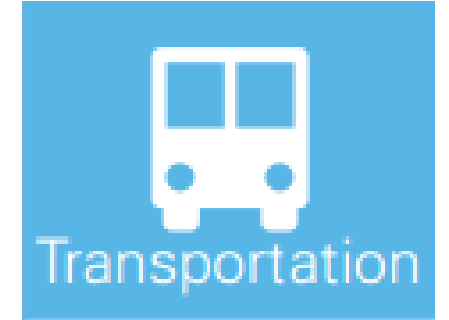
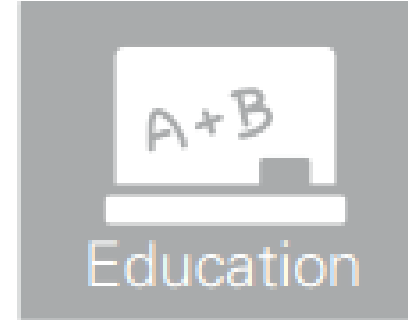
Follow the discussion

#CloseHealthGaps



Source: <https://societyhealth.vcu.edu/work/the-projects/mapschicago.html>

# SOCIAL DETERMINANTS OF HEALTH



Source: HRET 2017

# WHY IS THIS IMPORTANT?

Economic Stability	Neighborhood and Physical Environment	Education	Food	Community and Social Context	Health Care System
Employment	Housing	Literacy	Hunger	Social integration	Health coverage
Income	Transportation	Language	Access to healthy options	Support systems	Provider availability
Expenses	Safety	Early childhood education		Community engagement	Provider linguistic and cultural competency
Debt	Parks	Vocational training		Discrimination	Quality of care
Medical bills	Playgrounds	Higher education			
Support	Walkability				

## Health Outcomes

Mortality, Morbidity, Life Expectancy, Health Care Expenditures, Health Status, Functional Limitations



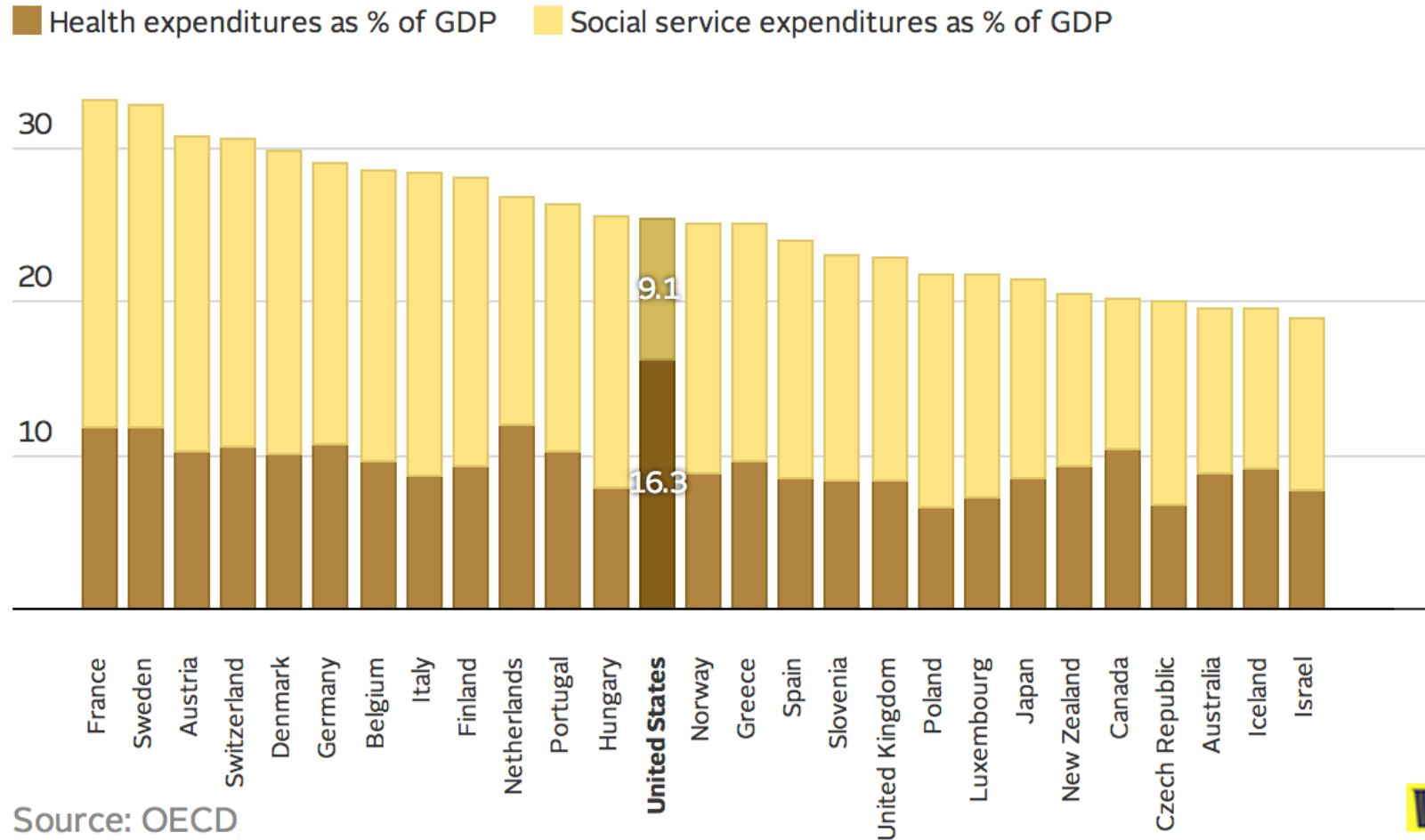
READMISSION, NON- COMPLIANCE, COST, RISK

OUTCOMES, SATISFACTION



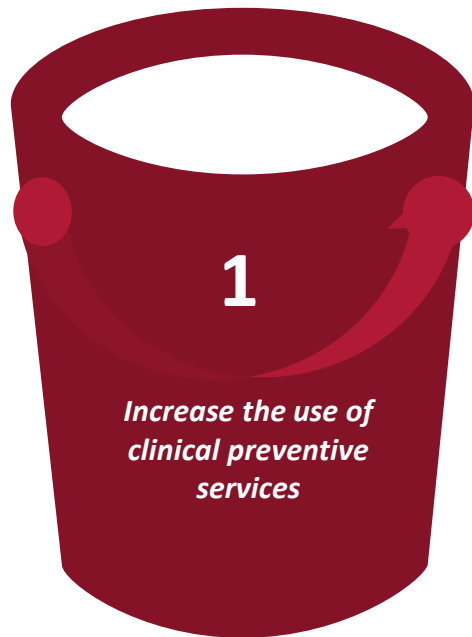
# HOW WE SPEND ON HEALTH

## The U.S. is an anomaly in health and social spending patterns



# HOW TO ADDRESS SDOH

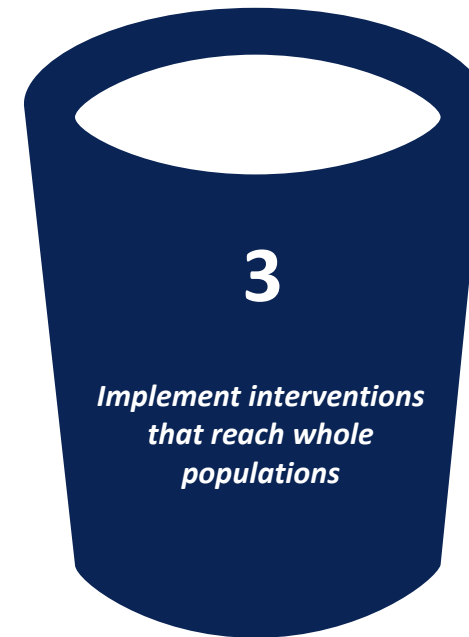
## Traditional Clinical Prevention



## Innovative Clinical Prevention



## Community-Wide Prevention



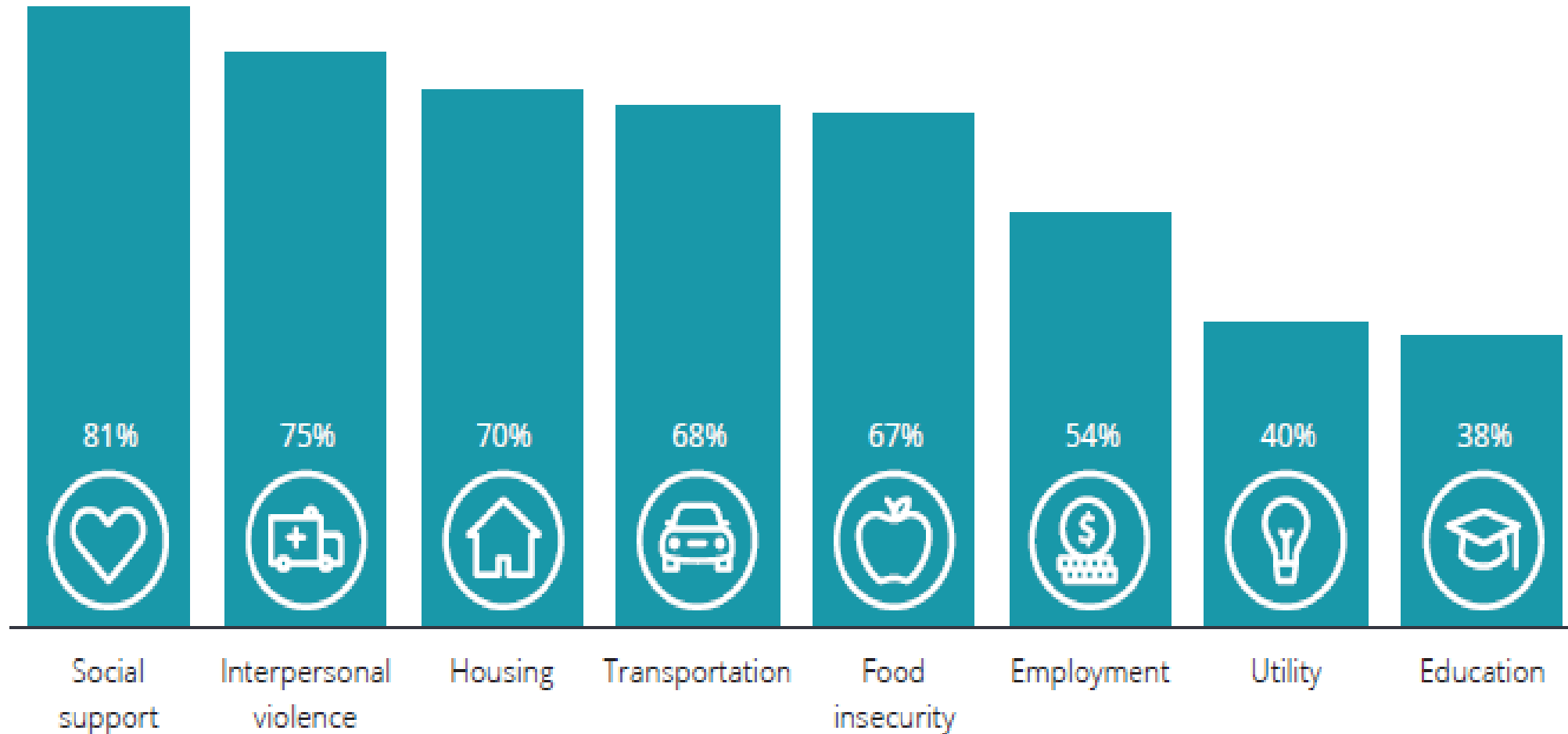
# ACTIONABLE STRATEGIES

- Screen for SDOH
- Connect clinical and community
- Connect with community resources
- Invest in communities
- Measure impact



# SCREENING FOR SDOH

Figure 3. Hospital screening by social needs category



Source: Deloitte Center for Health Solutions' 2017 Social Determinants of Health Hospital Survey

# CONNECT CLINICAL AND COMMUNITY







MedStar Health

CONNECT WITH

COMMUNITY RESOURCES





# INVEST IN COMMUNITIES

## Bon Secours Richmond Community Hospital Church Hill, Richmond, VA





# MEASURE IMPACT

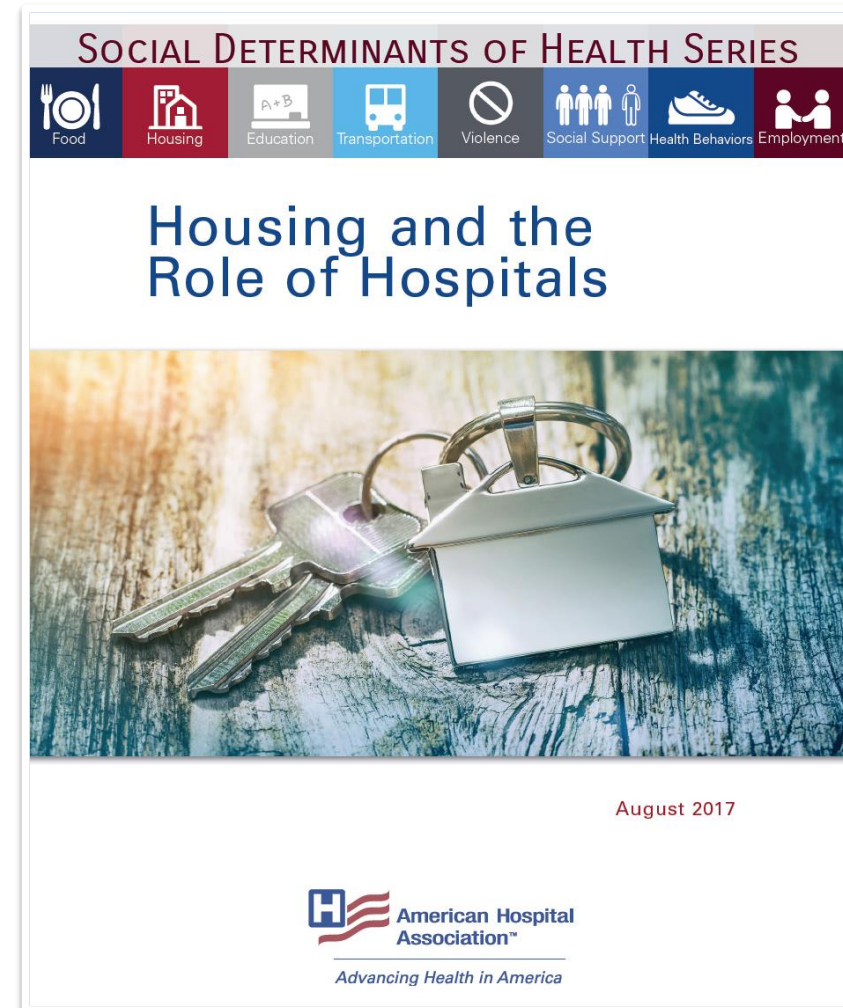




# SOCIAL DETERMINANTS OF HEALTH SERIES



[www.aha.org/foodinsecurity](http://www.aha.org/foodinsecurity)



[www.aha.org/housing](http://www.aha.org/housing)

# OTHER RESOURCES

- Webinars
- Digital Stories
  - [Boston Medical Center's Preventive Food Pantry](#)
- Podcasts
- Articles

Visit [hret.org/sdoh](https://hret.org/sdoh) for more information

# UPCOMING RESOURCES

- Transportation and the Role of Hospitals
  - *Report*
  - *Webinar on Nov. 17*
- Digital Story on St. Joseph Health's housing initiative
- Education and the Role of Hospitals
  - *Report and webinar*





# THE ROAD AHEAD





# THANK YOU

Julia Resnick, MPH

Senior Program Manager, Health Research & Educational Trust  
American Hospital Association

[jresnick@aha.org](mailto:jresnick@aha.org)